

Foreword

This year, we have opted to try something different!

We've chosen to present our Annual Report as a desk calendar, so that each of our programs can be enjoyed and reflected on throughout the year.

This PDF version does not include the calendar aspect, however, we encourage you to reach out to holly.ambrosino@concernaustralia.org.au if you would like to acquire one of these calendars.

Enjoy!

2023 Calendar



concern
australia

Persistence and Growth

2021-2022 Annual Report





Board Chair

"As we reflect on a challenging year, it quickly becomes apparent how the daily commitment of our people and partners has led to continued fruitfulness in established areas and the emergence of new initiatives."

- Jon Ma



Chief Executive Officer



"We are incredibly proud of the tenacity and resilience of our team throughout this past year. Their devotion to young people is unwavering, and we are blessed to have experienced continued growth as a result."

- Michelle Crawford



**Scan here for
welcome
message!**



Executive



Chief Executive Officer

Michelle Crawford



GM Service Delivery

Andrea Greenwood



GM Living, Learning & Earning

Richard Parker



GM Business Operations

Georgette Warden

Board



CHAIR

Jon Ma



DEPUTY CHAIR

Brendan Littlechild



SECRETARY

Stephanie Armstrong



TREASURER

Jamie Munton



MEMBER

Michelle Paterson



MEMBER

Nathan Linton



MEMBER

Kathleen Williams AM



MEMBER

Priscilla Robinson

30%

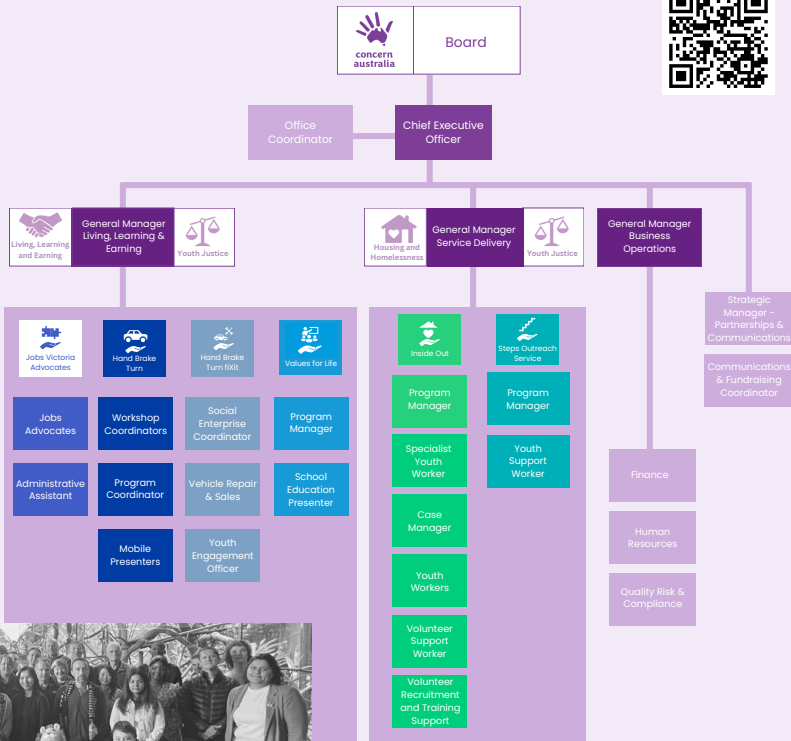
Volunteer staff in
our workplace

75%

Female
executive team

41%

Non-English
speaking
background





Hand Brake Turn



Hand Brake Turn is continuing to take great strides through its work with young people.

We are implementing significant focus on providing quality education; reducing gender disparities; opening greater employment pathways; and ensuring equal opportunities for young people with disabilities.

115+

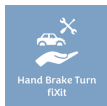
**Total
Enrolments**

10%

**Female
Cohort**

30

**Mobile
Sessions**
*(In schools &
community settings)*



fiXit Social Enterprise



After a successful 12-month pilot period, we are thrilled that our Social Enterprise, fiXit, has now launched!

Through providing Hand Brake Turn graduates with 3-month employment contracts and donating a number of re-furbished vehicles to disadvantaged members of the community, fiXit has already demonstrated significant social impact.



1.3k

Employment
hours provided

71%

Interest from
HBT students

*"fiXit was born out of a need to provide a **further pathway** for young people with an opportunity to **build on their skills** they learnt while participating in Hand Brake Turn."*

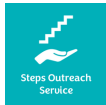
- Michael Ponchard, Social Enterprise Coordinator



Concern
Australia works in
partnership with
young people
and children,
creating
opportunities for
them to **enjoy full**
and **meaningful**
lives.



Scan the QR code to give your tax deductible EOFY donation!



Steps Outreach Service



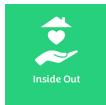
In what has been a difficult year following the turmoil of the COVID-19 pandemic, STEPS has continued to support young people experiencing homelessness.

We have witnessed a drastic decline in the mental health of young people living on the streets, and we are actively addressing these complex needs.

*"Every child has the right to have **stability** and **unconditional love** in their life... and that's what we provide."*

- Anne Mitchell, STEPS Program Manager





Inside Out



The work of Inside Out continues to be impactful and essential in supporting young people that are transitioning from the Out-Of-Home Care system.

Inside Out has weathered many changes and challenges as we navigate the complex issues that young people are experiencing every day.

The Inside Out program is supported by the Victorian Government.

25

Young people in
our Enhanced Lead
Tenant housing

20

Young people
supported via Targeted
Care Packages

5

CREWY excursion
experiences provided
to young people





Values for Life



As Australia emerges from extensive lockdowns, we are observing new trends in the challenges that students are facing, and are delivering tailored workshops and seminars to address these evolving needs.

Increased levels of fear, anxiety, disconnection and under-developed social skills are greatly impacting young people today.

169+

Seminars
Delivered

11k

Students
Engaged With



Financial Overview

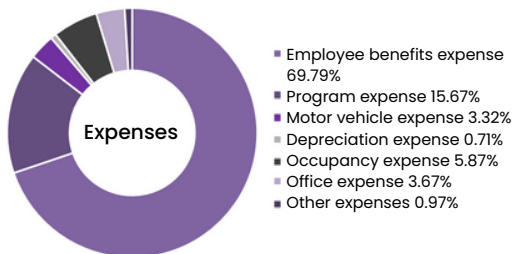
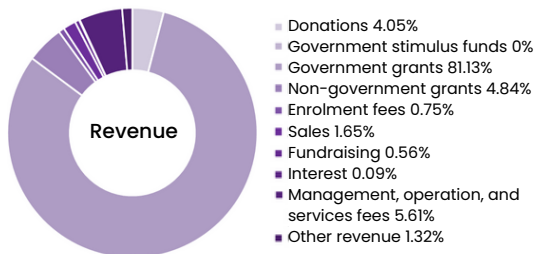
Scan here to
download the
full financial
report



*"After the pressures that COVID-19 placed on the organisation, we are pleased to report a **positive financial result** for FY2021-2022. This outcome would not have been possible without our loyal donors and the ability of our programs to re-think their service delivery. This allowed us to continue to support vulnerable and at-risk young people, **despite the challenges posed by the pandemic.**"*

- Jamie Munton, Treasurer

Snapshot: Concern Australia Welfare Inc



A Few of Our Supporters



Christmas is next month!

Get your Christmas donation in early by scanning this QR code.



Our Commitments



Our Child Safe Commitment

At Concern Australia, we are committed to the safety and well-being of all children and young people participating in our programs and the welfare of the children in our care will always be our first priority. Children have a right to be safe and protected.

Acknowledgement of Country

Concern Australia acknowledges the traditional custodians of the land on which it operates and we pay respect to Elders past, present and emerging. We acknowledge and respect the continuation of cultural, spiritual and educational practices of Aboriginal and Torres Strait Islander Peoples across the nation.

We acknowledge the sorrow of the Stolen Generations and the ongoing impacts of colonisation and dispossession on Aboriginal and Torres Strait Islander Peoples. We recognise the strengths and resilience of Australia's First Peoples and champion a reconciled, just and equitable Australia.

We believe in the sovereignty and right of Australia's First Peoples to determine their own future.



Equality Commitment

Concern Australia are passionate about creating a workplace that promotes and values diversity. We are committed to providing a safe environment for all people, regardless of their age, culture, ability, gender, language, racial origin, religious belief and / or sexual identity.

A Covenant of Reconciliation

At Concern Australia, we acknowledge that we meet on the land for which the Wurundjeri people are the rightful custodians.

We rejoice that the falsehood and ignorance of Terra Nullius has been overturned by the historic High Court decision in the Eddie Mabo case.

We apologise for the children and land stolen, for labour unrewarded, discrimination practiced, and self-determination and dignity denied until now.

Concern Australia is currently developing a Reconciliation Action Plan that takes these initiatives to our workplace, highlighting our engagement, turning good intentions into affirmative actions.

As an organisation, we commit ourselves to these processes.

Contact Us

Use the contact details below or scan the QR code to get in touch with us!

E: info@concernaustralia.org.au | P: (03) 9470 2972



Don't forget to give your Christmas donation before Dec 25th!